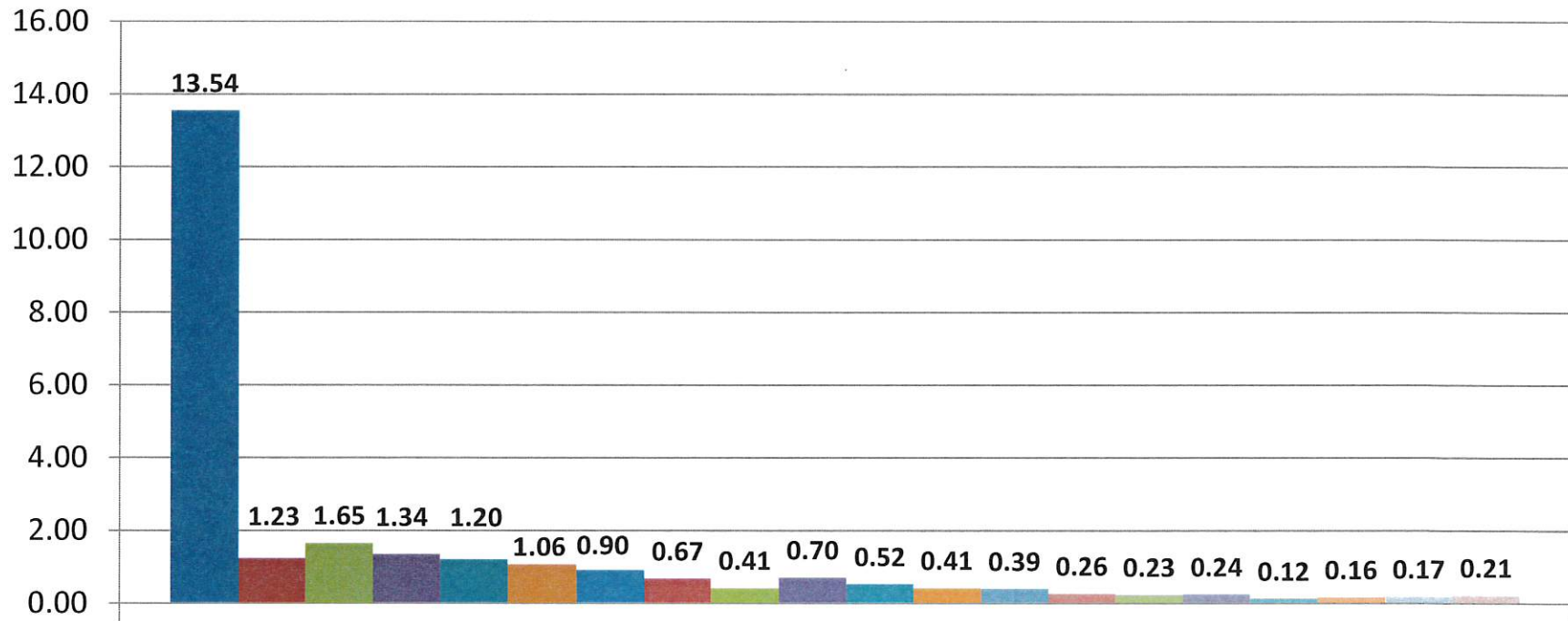
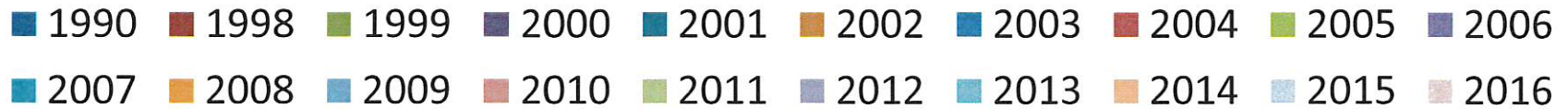


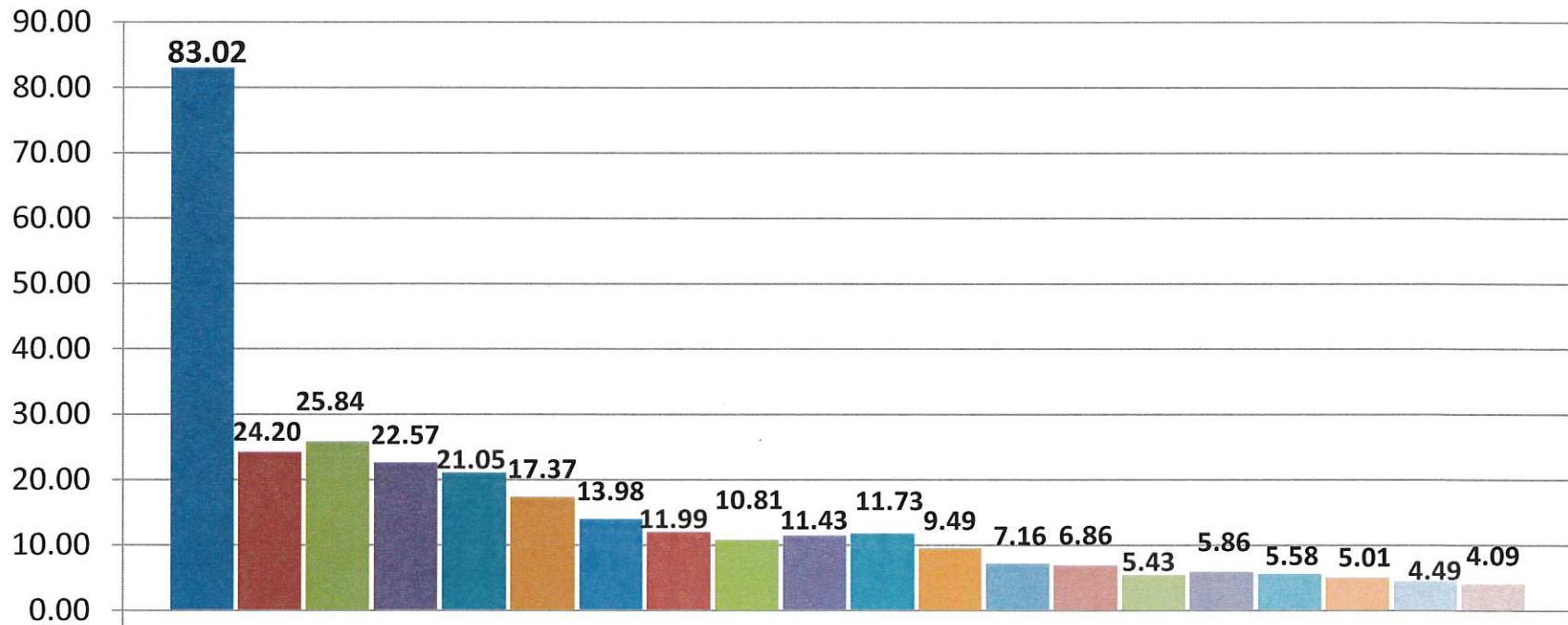
BOILERMAKER INJURY RATES FOR POPULATION COVERED BY STUDY



Lost Time Rates



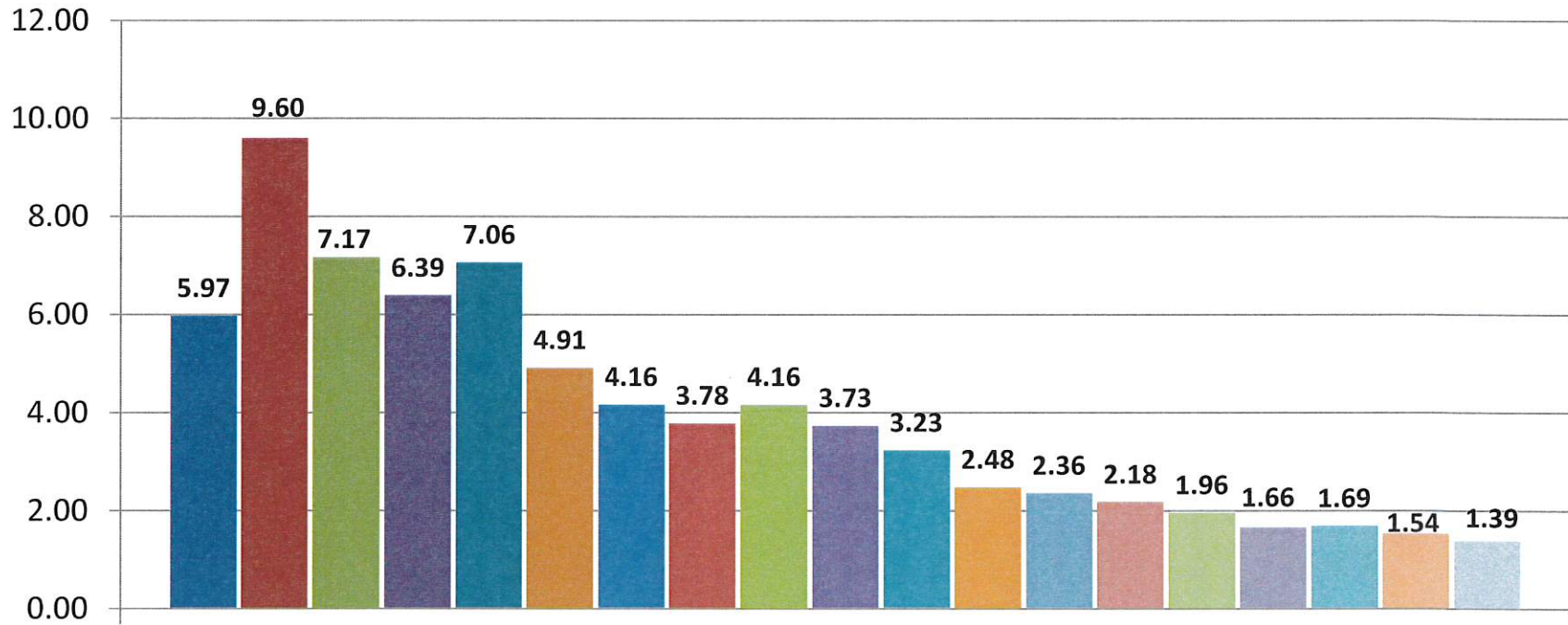
BOILERMAKER INJURY RATES FOR POPULATION COVERED BY STUDY



Compensable Rate



BOILERMAKER INJURY RATES FOR POPULATION COVERED BY STUDY



OSHA Recordable Rates

- 1998 1999 2000 2001 2002 2003 2004 2005 2006 2007
- 2008 2009 2010 2011 2012 2013 2014 2015 2016